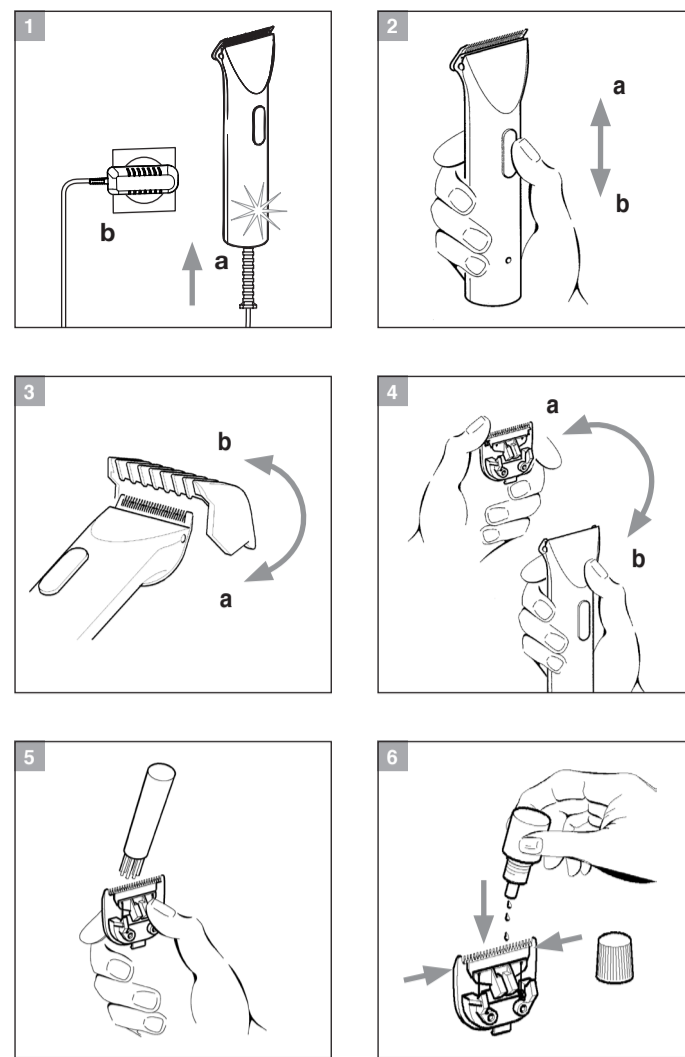
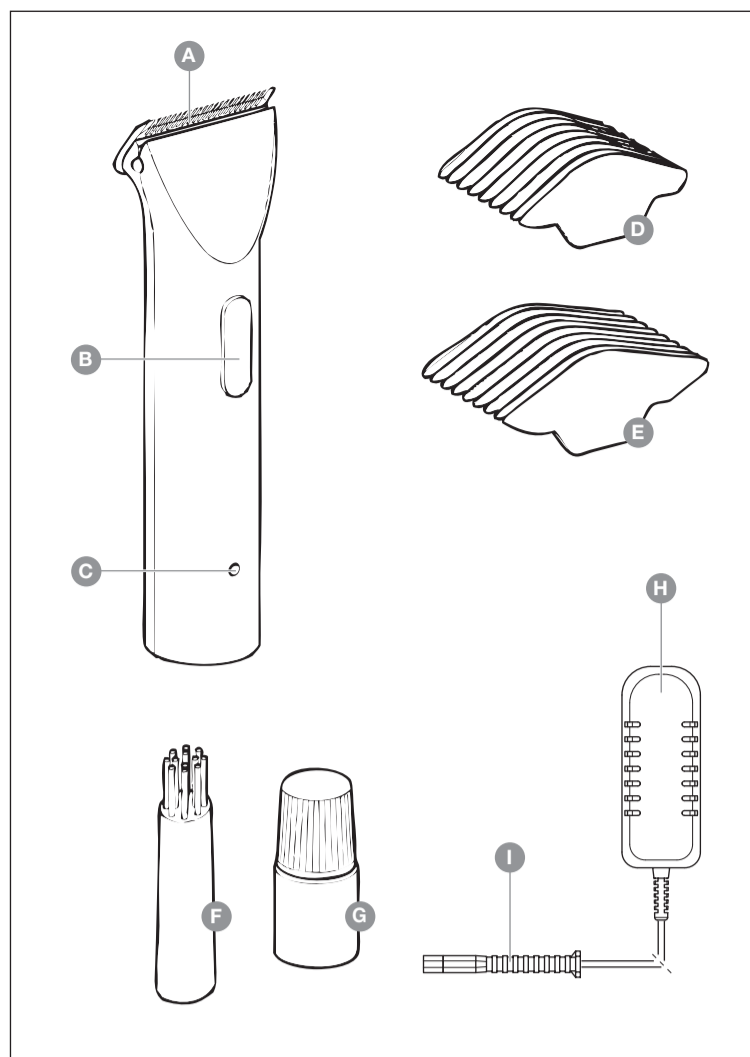




Type 1565
8761/8787

- D** Gebrauchsanweisung
Akku-Haarschneidemaschine
- GB** Operating Instructions
Cord/cordless hair-clipper
- F** Mode d'emploi
Tondeuse à cheveux secteur/batterie
- I** Istruzioni per l'uso
Tagliacapelli a rete a batteria

1565-142 06/2008



D Gebrauchsanweisung

- Bezeichnung der Teile**
- A** Schneidsatz
 - B** Ein-/Ausschalter
 - C** Ladekontrollanzeige
 - D** Aufsteckkamm, 3/6 mm Schnittlänge
 - E** Aufsteckkamm, 9/12 mm Schnittlänge
 - F** Öl für den Schneidsatz
 - G** Reinigungsbürste
 - H** Steckerschaltnetzteil
 - I** Geräteanschlussstecker

Wichtige Sicherheitshinweise
Beim Gebrauch von elektrischen Geräten sind zum eigenen Schutz vor Verletzungen und Stromschlägen folgende Hinweise unbedingt zu beachten:

- Vor Gebrauch des Gerätes alle Anweisungen durchlesen!**
- Nutzen Sie Haarschneidemaschinen ausschließlich zum Schneiden von menschlichem Haar. Nutzen Sie Tierschneidemaschinen ausschließlich zum Schneiden von Tierhaaren und Tierfell.
 - Gerät nur an Wechselspannung anschließen. Beachten Sie die angegebene Nennspannung auf dem Typenschild.
 - Ein ins Wasser gefallenes Elektrogerät auf keinen Fall berühren.
 - Sofort den Netzstecker ziehen.
 - Elektrogeräte niemals in der Badewanne oder unter der Dusche benutzen.
 - Elektrogeräte stets so ablegen bzw. aufbewahren, dass sie nicht ins Wasser (z.B. Waschbecken) fallen können. Den Kontakt von Elektrogeräten mit Wasser und anderen Flüssigkeiten vermeiden.
 - Außer beim Aufladen stets sofort nach Gebrauch des Gerätes den Netzstecker ziehen.
 - Vor dem Reinigen des Gerätes den Netzstecker ziehen.
 - Dieses Gerät ist nicht für den Gebrauch von Personen (einschließlich Kindern) mit verringerten körperlichen, sensorischen oder geistigen Fähigkeiten oder Mangel an Erfahrung und Wissen bestimmt, es sei denn, sie werden beaufsichtigt oder erhalten eine Anweisung hinsichtlich des Gebrauches des Gerätes von einer Person, die für ihre Sicherheit verantwortlich ist. Kinder sollten beaufsichtigt werden, um sicherzustellen, dass sie nicht mit dem Gerät spielen.
 - Das Gerät nur zu dem in der Bedienungsanleitung beschriebenen, bestimmungsgemäßen Zweck verwenden. Ausschließlich das vom Hersteller empfohlene Zubehör verwenden.
 - Das Gerät niemals mit einem beschädigten Stromkabel bzw. Steckerschaltnetzteil verwenden. Das Gerät ebenfalls nicht benutzen, wenn es nicht ordnungsgemäß funktioniert, wenn es beschädigt ist, oder wenn es ins Wasser gefallen ist. In diesen Fällen das Gerät zur Inspektion und Reparatur an unser Service Center einsenden. Elektrogeräte dürfen nur durch elektrotechnisch ausgebildete Fachkräfte repariert werden.
 - Das Gerät zum Tragen nicht am Netzkabel festhalten, und das Kabel nicht als Griff verwenden.
 - Das Netzkabel von heißen Oberflächen fernhalten.
 - Das Gerät nicht mit verdrehtem oder abgenicktem Kabel aufladen bzw. aufbewahren.
 - Niemals irgendwelche Gegenstände in die Geräteöffnungen stecken oder fallen lassen.
 - Das Gerät nur in trockenen Räumen benutzen und aufbewahren.
 - Das Gerät niemals in Umgebungen benutzen, in denen Aerosol- (Spray-) Produkte verwendet werden oder in denen es statisch aufgeladen wird.
 - Zum Schutz vor Verletzungen das Gerät niemals benutzen, wenn der Schneidsatz beschädigt ist.
 - Keine Einwegbatterien verwenden. Akkus ausschließlich im Service Center austauschen lassen.
 - Vor der ersten Inbetriebnahme ist eine Ladezeit von 16 Stunden erforderlich.
 - Das Gerät ist schutzisoliert und funktionsstabil. Es erfüllt die Anforderungen der EU-Richtlinie Elektromagnetische Verträglichkeit 2004/108/EG und die Niederspannungsrichtlinie 2006/95/EG.

Verbrauchte Batterien/Akkus gehören nicht in den Hausmüll. Entsorgen Sie verbrauchte Batterien/Akkus entsprechend den gesetzlichen Bestimmungen.

- Netzbetrieb**
- Geräteanschluss-Stecker des Steckerschaltnetztes in die Gerätebuchse stecken (Abb. 1a).
 - Steckerschaltnetzteil in die Steckdose stecken (Abb. 1b).
 - Mit dem Ein-/Ausschalter das Gerät einschalten (Abb. 2a) und nach Gebrauch ausschalten (Abb. 2b).
 - Hinweis: Sollte das Gerät bei ganz entladenerm Akku im Netzbetrieb nicht funktionieren, Gerät ausschalten und 5 Minuten laden. Gerät wieder einschalten und mit Netzanschluss betreiben.

- Akku laden**
- Steckerschaltnetzteil in die Steckdose stecken (Abb. 1b).
 - Sicherstellen, dass das Gerät ausgeschaltet ist, sonst erfolgt kein Aufladen (Abb. 2b).
 - Während des Ladevorgangs leuchtet die Ladekontrollanzeige (C).
 - Empfehlung: Ein Wiederaufladen sollte erst dann erfolgen, wenn die Leistung des Gerätes merklich zurückgeht. Längere Ladezeiten sind allerdings unschädlich.
 - Die Ladezeit bis zum Erreichen der vollen Kapazität beträgt ca. 10 Stunden.

- Akku Betrieb**
- Mit dem Ein-/Ausschalter das Gerät einschalten (Abb. 2a) und nach Gebrauch ausschalten (Abb. 2b).
 - Bei voll geladenem Akku kann das Gerät bis zu max. 100 Minuten ohne Aufladung betrieben werden.
 - Hinweis: Bei unzureichender Pflege des Schneidsatzes kann sich die Laufzeit erheblich reduzieren.

- Aufsteckkamm aufstecken / abnehmen**
- Aufsteckkamm an der Schneidkante des Schneidsatzes ansetzen und bis zum Einrasten in Richtung Gehäuse auf den Schneidsatz drücken (Abb. 3a).
 - Der Aufsteckkamm lässt sich durch Drücken in Richtung Schneidkante entfernen (Abb. 3b).

- Schneiden mit Aufsteckkamm**
- Das Gerät kann auch mit Aufsteckkamm betrieben werden. Folgende Aufsteckkämme sind im Lieferumfang enthalten:
 - Aufsteckkamm 1 = 3 mm und 6 mm Schnittlänge
 - Aufsteckkamm 2 = 9 mm und 12 mm Schnittlänge
 - Die Schnittlänge (in mm) ist am Aufsteckkamm abzulesen.
 - Ein Aufsteckkamm kann für zwei Schnittlängen benutzt werden. Für die zweite Schnittlänge den Aufsteckkamm abnehmen, drehen und wieder aufsetzen.
 - Der Vorteil an diesen Aufsteckkamm ist, egal in welchem Winkel man das Gerät an den Haaren ansetzt, immer wird die gleiche Schnittlänge erreicht.

- Reinigung und Pflege**
- Das Gerät nicht in Wasser tauchen!
 - Nach jedem Gebrauch den Aufsteckkamm abnehmen und mit der Reinigungsbürste die Haar-reste aus der Gehäuseöffnung und vom Schneidsatz entfernen. Dazu den Schneidsatz abnehmen (Abb. 4a) und den Reinigungshebel drücken (Abb. 5). So können einfach die Haarreste zwischen Scherkamm und Schermesser mit der Reinigungsbürste entfernt werden (EASY CLEANING).
 - Das Gerät nur mit einem weichen, eventuell leicht feuchten Tuch abwischen. Keine Lösungs- und Scheuermittel verwenden!
 - Der Schneidsatz kann mit einem Hygiene-Spray Best. 4005-7051 gereinigt werden. Verwenden Sie ausschließlich dieses Reinigungsmittel.
 - Für eine gute und lang anhaltende Schneidleistung ist es wichtig den Schneidsatz häufig zu ölen (Abb. 6). Benutzen Sie hierzu ausschließlich Schneidsatzöl Best. Nr. 1854-7935 (200 ml).
 - Schneidsatzöl sowie Hygiene-Spray können Sie über Ihren Händler oder unser Service Center beziehen.
 - Wenn nach längerer Gebrauchsdauer trotz regelmäßigem Reinigen und Ölen die Schneidleistung nachlässt, sollte der Schneidsatz ausgewechselt werden.
 - Der Aufsteckkamm dient nach Gebrauch und Reinigung des Gerätes auch als Messerschutz.

- Austausch des Schneidsatzes**
- Mit dem Ein-/Ausschalter das Gerät ausschalten (Abb. 2b).
 - Der Schneidsatz lässt sich entfernen, indem er in Pfeilrichtung vom Gehäuse weggedrückt wird (Abb. 4a).
 - Zum Wiedereinsetzen den Schneidsatz mit dem Haken in die Aufnahme am Gehäuse ansetzen und bis zum Einrasten zum Gehäuse drücken (Abb. 4b).

Entsorgung EU-Länder
Das Gerät darf nicht mit dem Hausmüll entsorgt werden. Im Rahmen der EU-Richtlinie über die Entsorgung von Elektro- und Elektronikgeräten wird das Gerät bei den kommunalen Sammelstellen bzw. Wertstoffhöfen kostenlos entgegengenommen. Die ordnungsgemäße Entsorgung dient dem Umweltschutz und verhindert mögliche schädliche Auswirkungen auf Mensch und Umwelt.

- Entsorgung Nicht-EU-Länder**
- Das Gerät am Ende seiner Lebensdauer bitte umweltgerecht entsorgen.
 - Steckerschaltnetzteil aus der Steckdose ziehen und Gerät einschalten damit die Akkus völlig entladen werden.
 - Schneidsatz entfernen (Abb. 4a) und mit einem Schraubendreher die Schrauben in der Gehäuseöffnung entfernen. Die Gehäusehälften kräftig auseinanderziehen und den kompletten Antrieb mit Platine entnehmen.
 - Den Akkupack von der Platine abziehen. Dazu eventuell einen Schraubendreher zum Abhebeln verwenden.
 - Akkus einer geeigneten Sammelstelle zuführen.
 - Das Gerät darf nach Entnahme der Akkus nicht mehr ans Netz angeschlossen werden!

GB Operating instructions

- Description of parts**
- A** Blade-set
 - B** On/Off switch
 - C** Charge indicator
 - D** Attachment-comb, cutting-length 3/6 mm
 - E** Attachment-comb, cutting-length 9/12 mm
 - F** Oil for the blade-set
 - G** Cleaning brush
 - H** Plug-in transformer
 - I** Equipment plug

Important safety information
For your own protection from injuries and electric shocks, the following information must be observed when using electrical equipment:

- Read all the instructions before using the appliance!**
- Only use hair clippers to cut human hair.
 - Only use animal clippers to cut animal hair and animal fur.
 - Only connect the equipment to an AC power-supply. Note the rated voltage on the rating plate!
 - Never touch electrical equipment which has fallen into water.
 - Disconnect from the mains immediately.
 - Never use electrical equipment in the bath or shower.
 - Always position or store electrical equipment where it cannot fall into water (e.g. wash basin).
 - Avoid electrical equipment coming into contact with water and other liquids.
 - Always disconnect the appliance from the power-supply immediately after use except when charging.
 - Disconnect the appliance from the power-supply before cleaning.
 - This appliance is not suitable for use by people (including children) with physical, sensory or mental disabilities or who do not have the relevant experience or knowledge of using such appliance, unless under the supervision of or after having received instruction in the use of the appliance by an individual who is responsible for their safety. Children should be supervised to ensure they do not play with the appliance.
 - Only use the appliance for the proper purpose as described in the operating instructions. Only use accessories recommended by the manufacturer.
 - Never use the appliance if the mains cable or plug-in transformer is damaged.
 - In addition, do not use the appliance if it is damaged or if it has fallen into water. In these cases, send the appliance to our Service Center to be inspected and repaired. Only specialists properly trained in the handling of electrotechnical devices may repair electrical equipment.
 - Do not hold the appliance by the mains-cable when carrying it and do not use the cable as a handle.
 - Keep the mains-cable away from hot surfaces.
 - Make sure that the mains-cable is not twisted or kinked when charging or storing.
 - Never insert or allow any objects to fall into the openings of the appliance.
 - Only use and store the appliance in dry rooms.
 - Never use the appliance where aerosol (spray) products are being used or where oxygen is released.
 - To prevent injury, never use the appliance if the blade-set is damaged. Do not use disposable batteries. Rechargeable battery units can only be obtained from authorized Service Centers.
 - Before the equipment is used for the first time, it should be charged for 16 hours.
 - The appliance is safely insulated and radio screened. It meets the requirements of EU Directive 2004/108/EC regarding electromagnetic compatibility and EC Low Voltage Directive 2006/95/EC.

Exhausted batteries/rechargeable batteries should not be disposed of in household waste. Dispose of them in accordance with legal regulations.

Mains operation
Connect the plug-in transformer to the appliance socket (Fig. 1a).
Connect the plug-in transformer to the mains power supply (Fig. 1b).
Switch the appliance on using the on/off switch (Fig. 2a) and, after use, switch it off again (Fig. 2b).

Charging the battery
Connect the plug-in transformer to the mains power supply (Fig. 1b).
Make sure that the appliance is switched off, otherwise it cannot be charged (Fig. 2b). Whilst charging, the charge indicator light (C) is illuminated.
Recommendation: only recharge the appliance when its performance has deteriorated noticeably. Longer charging times do not damage the appliance.
It takes approx. 10 hours for the appliance to be fully charged.

Operation of rechargeable battery
Using the ON/OFF switch, switch on the appliance (Fig. 2a), then switch off again after use (Fig. 2b).
The appliance can also be used without the power-supply operated for a maximum of 100 minutes if the battery is fully charged.
Note: In case of insufficient maintenance of the blade set, the operating time can be reduced considerably.

Attaching/removing the attachment-comb
Place the attachment-comb on to the cutting edge of the blade-set and press it down on to the blade-set in the direction of the housing until it locks into position (Fig. 3a).
The variable attachment-comb can easily be removed by pushing it in towards the cutting edge (Fig. 3b).

Cutting with the attachment-comb
The appliance can also be operated with attachment combs. The appliance is supplied with the following attachment-combs:
Attachment-comb 1 = cutting-lengths 3 mm and 6 mm
Attachment-comb 2 = cutting-lengths 9 mm and 12 mm
The cutting-length (in mm) is shown on the attachment-comb.
Each attachment-comb can be used for two different cutting-lengths. For the second length, all you need to do is remove the attachment-comb, rotate and replace it.
The advantage of these attachment-combs is that the hair is always cut at the same cutting-length, no matter what angle the hair is approached.

Cleaning and general care
Never immerse the appliance in water.
Remove the attachment-comb after each use and remove any hairs from the housing and blade-set using the cleaning brush. First remove the blade-set (Fig. 4a) and press the cleaning lever (Fig. 5). This makes it easy to remove residual hairs from between the top blade and bottom blade with the cleaning brush (EASY CLEANING).
The charging contacts on the appliance and charging stand must always be kept clean.
Only wipe the appliance with a soft or slightly damp cloth.
Never use solvents or scouring agents.
The blade-set may be cleaned with a hygienic spray order no. 4005-7051. Do not use any other cleaning agent.
The blade-set should be oiled frequently in order to maintain its good cutting performance and thus ensure a long service life (Fig. 6). Only use blade-set oil order no. 1854-7935 (200 ml).
Blade-set oil and hygienic spray are available from your dealer or our Service Centre.
The blade-set should be replaced if the cutting performance is reduced after extended use, despite regular cleaning and lubrication.
After cleaning, push on the attachment-comb to protect the blade.

Changing the blade-set
Switch off using the On/Off switch (Fig. 2b).
The blade-set can be removed by sliding it away from the housing in the direction of the arrow (Fig. 4a).
To replace the blade-set, position it with the hook in the slot on the housing and press until it clicks into place (Fig. 4b).

Disposal in EU countries
Do not dispose of the appliance with the domestic refuse. As part of the EU Directive governing the disposal of electrical and electronic equipment, the appliance is accepted free of charge by local waste collection points or recycling centres. Correct disposal will ensure environment protection and prevent a potential harmful impact on people and the environment.

Disposal in non-EU countries
Please dispose of the appliance at the end of its service life in an environmentally friendly manner.
Disconnect the plug-in transformer from the mains power supply and switch on the appliance to discharge the battery completely.
Remove blade-set (Fig. 4a) and remove the screws in the housing opening using a screwdriver. Vigorously pull apart the two halves of the housing and remove the entire drive unit with mounting plate.
Pull the battery pack off the mounting plate. A screwdriver may be used to lever it off.
Batteries should be disposed of at an appropriate collection-point.
Do not connect the appliance to the power-supply after the batteries have been removed.

F Mode d'emploi

- Description of parts**
- A** Blade-set
 - B** On/Off switch
 - C** Charge indicator
 - D** Attachment-comb, cutting-length 3/6 mm
 - E** Attachment-comb, cutting-length 9/12 mm
 - F** Oil for the blade-set
 - G** Cleaning brush
 - H** Plug-in transformer
 - I** Equipment plug

Important safety information
For your own protection from injuries and electric shocks, the following information must be observed when using electrical equipment:

- Read all the instructions before using the appliance!**
- Only use hair clippers to cut human hair.
 - Only use animal clippers to cut animal hair and animal fur.
 - Only connect the equipment to an AC power-supply. Note the rated voltage on the rating plate!
 - Never touch electrical equipment which has fallen into water.
 - Disconnect from the mains immediately.
 - Never use electrical equipment in the bath or shower.
 - Always position or store electrical equipment where it cannot fall into water (e.g. wash basin).
 - Avoid electrical equipment coming into contact with water and other liquids.
 - Always disconnect the appliance from the power-supply immediately after use except when charging.
 - Disconnect the appliance from the power-supply before cleaning.
 - This appliance is not suitable for use by people (including children) with physical, sensory or mental disabilities or who do not have the relevant experience or knowledge of using such appliance, unless under the supervision of or after having received instruction in the use of the appliance by an individual who is responsible for their safety. Children should be supervised to ensure they do not play with the appliance.
 - Only use the appliance for the proper purpose as described in the operating instructions. Only use accessories recommended by the manufacturer.
 - Never use the appliance if the mains cable or plug-in transformer is damaged.
 - In addition, do not use the appliance if it is damaged or if it has fallen into water. In these cases, send the appliance to our Service Center to be inspected and repaired. Only specialists properly trained in the handling of electrotechnical devices may repair electrical equipment.
 - Do not hold the appliance by the mains-cable when carrying it and do not use the cable as a handle.
 - Keep the mains-cable away from hot surfaces.
 - Make sure that the mains-cable is not twisted or kinked when charging or storing.
 - Never insert or allow any objects to fall into the openings of the appliance.
 - Only use and store the appliance in dry rooms.
 - Never use the appliance where aerosol (spray) products are being used or where oxygen is released.
 - To prevent injury, never use the appliance if the blade-set is damaged. Do not use disposable batteries. Rechargeable battery units can only be obtained from authorized Service Centers.
 - Before the equipment is used for the first time, it should be charged for 16 hours.
 - The appliance is safely insulated and radio screened. It meets the requirements of EU Directive 2004/108/EC regarding electromagnetic compatibility and EC Low Voltage Directive 2006/95/EC.

Exhausted batteries/rechargeable batteries should not be disposed of in household waste. Dispose of them in accordance with legal regulations.

Mains operation
Connect the plug-in transformer to the appliance socket (Fig. 1a).
Connect the plug-in transformer to the mains power supply (Fig. 1b).
Switch the appliance on using the on/off switch (Fig. 2a) and, after use, switch it off again (Fig. 2b).

Charging the battery
Connect the plug-in transformer to the mains power supply (Fig. 1b).
Make sure that the appliance is switched off, otherwise it cannot be charged (Fig. 2b). Whilst charging, the charge indicator light (C) is illuminated.
Recommendation: only recharge the appliance when its performance has deteriorated noticeably. Longer charging times do not damage the appliance.
It takes approx. 10 hours for the appliance to be fully charged.

Operation of rechargeable battery
Using the ON/OFF switch, switch on the appliance (Fig. 2a), then switch off again after use (Fig. 2b).
The appliance can also be used without the power-supply operated for a maximum of 100 minutes if the battery is fully charged.
Note: In case of insufficient maintenance of the blade set, the operating time can be reduced considerably.

Attaching/removing the attachment-comb
Place the attachment-comb on to the cutting edge of the blade-set and press it down on to the blade-set in the direction of the housing until it locks into position (Fig. 3a).
The variable attachment-comb can easily be removed by pushing it in towards the cutting edge (Fig. 3b).

Cutting with the attachment-comb
The appliance can also be operated with attachment combs. The appliance is supplied with the following attachment-combs:
Attachment-comb 1 = cutting-lengths 3 mm and 6 mm
Attachment-comb 2 = cutting-lengths 9 mm and 12 mm
The cutting-length (in mm) is shown on the attachment-comb.
Each attachment-comb can be used for two different cutting-lengths. For the second length, all you need to do is remove the attachment-comb, rotate and replace it.
The advantage of these attachment-combs is that the hair is always cut at the same cutting-length, no matter what angle the hair is approached.

Cleaning and general care
Never immerse the appliance in water.
Remove the attachment-comb after each use and remove any hairs from the housing and blade-set using the cleaning brush. First remove the blade-set (Fig. 4a) and press the cleaning lever (Fig. 5). This makes it easy to remove residual hairs from between the top blade and bottom blade with the cleaning brush (EASY CLEANING).
The charging contacts on the appliance and charging stand must always be kept clean.
Only wipe the appliance with a soft or slightly damp cloth.
Never use solvents or scouring agents.
The blade-set may be cleaned with a hygienic spray order no. 4005-7051. Do not use any other cleaning agent.
The blade-set should be oiled frequently in order to maintain its good cutting performance and thus ensure a long service life (Fig. 6). Only use blade-set oil order no. 1854-7935 (200 ml).
Blade-set oil and hygienic spray are available from your dealer or our Service Centre.
The blade-set should be replaced if the cutting performance is reduced after extended use, despite regular cleaning and lubrication.
After cleaning, push on the attachment-comb to protect the blade.

Changing the blade-set
Switch off using the On/Off switch (Fig. 2b).
The blade-set can be removed by sliding it away from the housing in the direction of the arrow (Fig. 4a).
To replace the blade-set, position it with the hook in the slot on the housing and press until it clicks into place (Fig. 4b).

Disposal in EU countries
Do not dispose of the appliance with the domestic refuse. As part of the EU Directive governing the disposal of electrical and electronic equipment, the appliance is accepted free of charge by local waste collection points or recycling centres. Correct disposal will ensure environment protection and prevent a potential harmful impact on people and the environment.

Disposal in non-EU countries
Please dispose of the appliance at the end of its service life in an environmentally friendly manner.
Disconnect the plug-in transformer from the mains power supply and switch on the appliance to discharge the battery completely.
Remove blade-set (Fig. 4a) and remove the screws in the housing opening using a screwdriver. Vigorously pull apart the two halves of the housing and remove the entire drive unit with mounting plate.
Pull the battery pack off the mounting plate. A screwdriver may be used to lever it off.
Batteries should be disposed of at an appropriate collection-point.
Do not connect the appliance to the power-supply after the batteries have been removed.

I Istruzioni per l'uso

- Description of parts**
- A** Blade-set
 - B** On/Off switch
 - C** Charge indicator
 - D** Attachment-comb, cutting-length 3/6 mm
 - E** Attachment-comb, cutting-length 9/12 mm
 - F** Oil for the blade-set
 - G** Cleaning brush
 - H** Plug-in transformer
 - I** Equipment plug

Important safety information
For your own protection from injuries and electric shocks, the following information must be observed when using electrical equipment:

- Read all the instructions before using the appliance!**
- Only use hair clippers to cut human hair.
 - Only use animal clippers to cut animal hair and animal fur.
 - Only connect the equipment to an AC power-supply. Note the rated voltage on the rating plate!
 - Never touch electrical equipment which has fallen into water.
 - Disconnect from the mains immediately.
 - Never use electrical equipment in the bath or shower.
 - Always position or store electrical equipment where it cannot fall into water (e.g. wash basin).
 - Avoid electrical equipment coming into contact with water and other liquids.
 - Always disconnect the appliance from the power-supply immediately after use except when charging.
 - Disconnect the appliance from the power-supply before cleaning.
 - This appliance is not suitable for use by people (including children) with physical, sensory or mental disabilities or who do not have the relevant experience or knowledge of using such appliance, unless under the supervision of or after having received instruction in the use of the appliance by an individual who is responsible for their safety. Children should be supervised to ensure they do not play with the appliance.
 - Only use the appliance for the proper purpose as described in the operating instructions. Only use accessories recommended by the manufacturer.
 - Never use the appliance if the mains cable or plug-in transformer is damaged.
 - In addition, do not use the appliance if it is damaged or if it has fallen into water. In these cases, send the appliance to our Service Center to be inspected and repaired. Only specialists properly trained in the handling of electrotechnical devices may repair electrical equipment.
 - Do not hold the appliance by the mains-cable when carrying it and do not use the cable as a handle.
 - Keep the mains-cable away from hot surfaces.
 - Make sure that the mains-cable is not twisted or kinked when charging or storing.
 - Never insert or allow any objects to fall into the openings of the appliance.
 - Only use and store the appliance in dry rooms.
 - Never use the appliance where aerosol (spray) products are being used or where oxygen is released.
 - To prevent injury, never use the appliance if the blade-set is damaged. Do not use disposable batteries. Rechargeable battery units can only be obtained from authorized Service Centers.
 - Before the equipment is used for the first time, it should be charged for 16 hours.
 - The appliance is safely insulated and radio screened. It meets the requirements of EU Directive 2004/108/EC regarding electromagnetic compatibility and EC Low Voltage Directive 2006/95/EC.

Exhausted batteries/rechargeable batteries should not be disposed of in household waste. Dispose of them in accordance with legal regulations.

Mains operation
Connect the plug-in transformer to the appliance socket (Fig. 1a).
Connect the plug-in transformer to the mains power supply (Fig. 1b).
Switch the appliance on using the on/off switch (Fig. 2a) and, after use, switch it off again (Fig. 2b).

Charging the battery
Connect the plug-in transformer to the mains power supply (Fig. 1b).
Make sure that the appliance is switched off, otherwise it cannot be charged (Fig. 2b). Whilst charging, the charge indicator light (C) is illuminated.
Recommendation: only recharge the appliance when its performance has deteriorated noticeably. Longer charging times do not damage the appliance.
It takes approx. 10 hours for the appliance to be fully charged.

Operation of rechargeable battery
Using the ON/OFF switch, switch on the appliance (Fig. 2a), then switch off again after use (Fig. 2b).
The appliance can also be used without the power-supply operated for a maximum of 100 minutes if the battery is fully charged.
Note: In case of insufficient maintenance of the blade set, the operating time can be reduced considerably.

Attaching/removing the attachment-comb
Place the attachment-comb on to the cutting edge of the blade-set and press it down on to the blade-set in the direction of the housing until it locks into position (Fig. 3a).
The variable attachment-comb can easily be removed by pushing it in towards the cutting edge (Fig. 3b).

Cutting with the attachment-comb
The appliance can also be operated with attachment combs. The appliance is supplied with the following attachment-combs:
Attachment-comb 1 = cutting-lengths 3 mm and 6 mm
Attachment-comb 2 = cutting-lengths 9 mm and 12 mm
The cutting-length (in mm) is shown on the attachment-comb.
Each attachment-comb can be used for two different cutting-lengths. For the second length, all you need to do is remove the attachment-comb, rotate and replace it.
The advantage of these attachment-combs is that the hair is always cut at the same cutting-length, no matter what angle the hair is approached.

Cleaning and general care
Never immerse the appliance in water.
Remove the attachment-comb after each use and remove any hairs from the housing and blade-set using the cleaning brush. First remove the blade-set (Fig. 4a) and press the cleaning lever (Fig. 5). This makes it easy to remove residual hairs from between the top blade and bottom blade with the cleaning brush (EASY CLEANING).
The charging contacts on the appliance and charging stand must always be kept clean.
Only wipe the appliance with a soft or slightly damp cloth.
Never use solvents or scouring agents.
The blade-set may be cleaned with a hygienic spray order no. 4005-7051. Do not use any other cleaning agent.
The blade-set should be oiled frequently in order to maintain its good cutting performance and thus ensure a long service life (Fig. 6). Only use blade-set oil order no. 1854-7935 (200 ml).
Blade-set oil and hygienic spray are available from your dealer or our Service Centre.
The blade-set should be replaced if the cutting performance is reduced after extended use, despite regular cleaning and lubrication.
After cleaning, push on the attachment-comb to protect the blade.

Changing the blade-set
Switch off using the On/Off switch (Fig. 2b).
The blade-set can be removed by sliding it away from the housing in the direction of the arrow (Fig. 4a).
To replace the blade-set, position it with the hook in the slot on the housing and press until it clicks into place (Fig. 4b).

Disposal in EU countries
Do not dispose of the appliance with the domestic refuse. As part of the EU Directive governing the disposal of electrical and electronic equipment, the appliance is accepted free of charge by local waste collection points or recycling centres. Correct disposal will ensure environment protection and prevent a potential harmful impact on people and the environment.

Disposal in non-EU countries
Please dispose of the appliance at the end of its service life in an environmentally friendly manner.
Disconnect the plug-in transformer from the mains power supply and switch on the appliance to discharge the battery completely.
Remove blade-set (Fig. 4a) and remove the screws in the housing opening using a screwdriver. Vigorously pull apart the two halves of the housing and remove the entire drive unit with mounting plate.
Pull the battery pack off the mounting plate. A screwdriver may be used to lever it off.
Batteries should be disposed of at an appropriate collection-point.
Do not connect the appliance to the power-supply after the batteries have been removed.