



PROFESSIONAL

DESIGNER™

MODEL 8355-400

PRODUCT VIDEO IS AVAILABLE ON WAHLPRO.COM

INDIVIDUAL CARTON WEIGHT	1.94 LBS
INDIVIDUAL CARTON SIZE	6.25" x 3.00" x 9.50"
MASTER PACK WEIGHT	23.25 LBS
MASTER PACK SIZE	19.70" x 13.10" x 10.50"
PACK QUANTITY	12
UPC	0 43917 83554 9
SCC	100 43917 83554 6

EFFECTIVE OCTOBER 2019



DESIGNER CLIPPER

UNIT WEIGHT: 1 LB

UNIT LENGTH: 6.25"

BLADE: 1005 3-HOLE BLADE

MOTOR: V5000 ELECTROMAGNETIC

PRODUCT OVERVIEW

PROFESSIONAL VIBRATOR CLIPPER

POWERFUL V5000 MOTOR

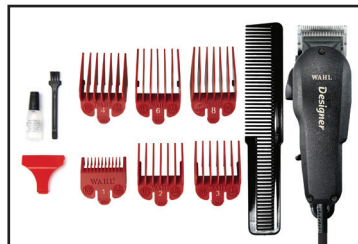
VERSATILE CLIPPER, CUTS HAIR WET OR DRY

BLADE LEVER ADJUSTS CUTTING LENGTH

COMES WITH 6 CUTTING GUIDES, RANGING FROM 1/8" - 1"



INCLUDES SPECIALTY EYEBROW CUTTING GUIDE



MODEL 8355-400 INCLUDES:

- PROFESSIONAL CLIPPER WITH ADJUSTABLE TAPER LEVER
- 6 RED CUTTING GUIDES (1/8" - 1")
- STYLING COMB
- OIL
- CLEANING BRUSH
- OPERATING INSTRUCTIONS
- RED BLADE GUARD (GUARANTEES PROFESSIONAL QUALITY)
- EYEBROW CUTTING GUIDE

CLIPPER ACCESSORIES

PREMIUM CUTTING GUIDES FIT: ALL WAHL VIBRATOR CLIPPERS, CORDLESS DESIGNER & PILOT



3171-500
#1- #8 PREMIUM
CUTTING GUIDES
IN ORGANIZER
1/8" - 1"



3354-1000
#1/2 PREMIUM
CUTTING GUIDE
1/16"
PACKED IN
COMB BAG



3354-1100
#1.5 PREMIUM
CUTTING GUIDE
3/16"
PACKED IN
COMB BAG



3354-1300
#1 PREMIUM
CUTTING GUIDE
1/8"
PACKED IN
COMB BAG

AVAILABLE SEPARATELY

SNAP-ON CLIPPER FINGER RING

FITS: ALL WAHL VIBRATOR CLIPPERS EXCEPT SENIOR MODELS



8839-100
ERGONOMIC NON-SLIP
FINGER RING
PACKED IN
COMB BAG

AVAILABLE SEPARATELY